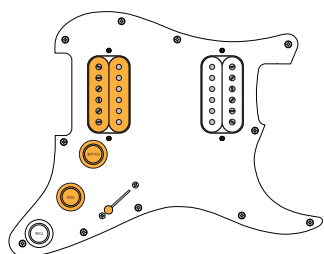
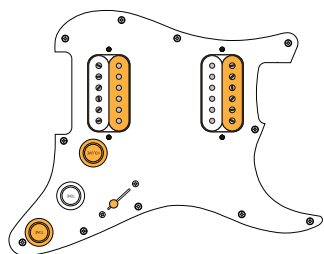


ACTIVE PICKUPS AND CONTROLS INDICATED IN ORANGE

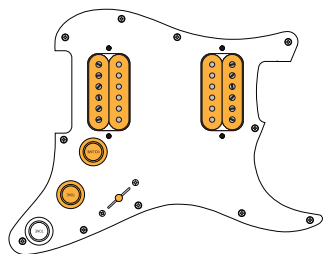
POSITION 1



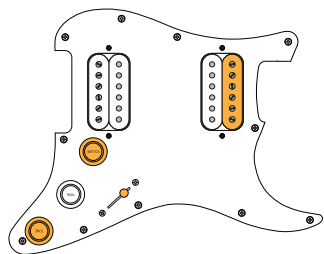
POSITION 2



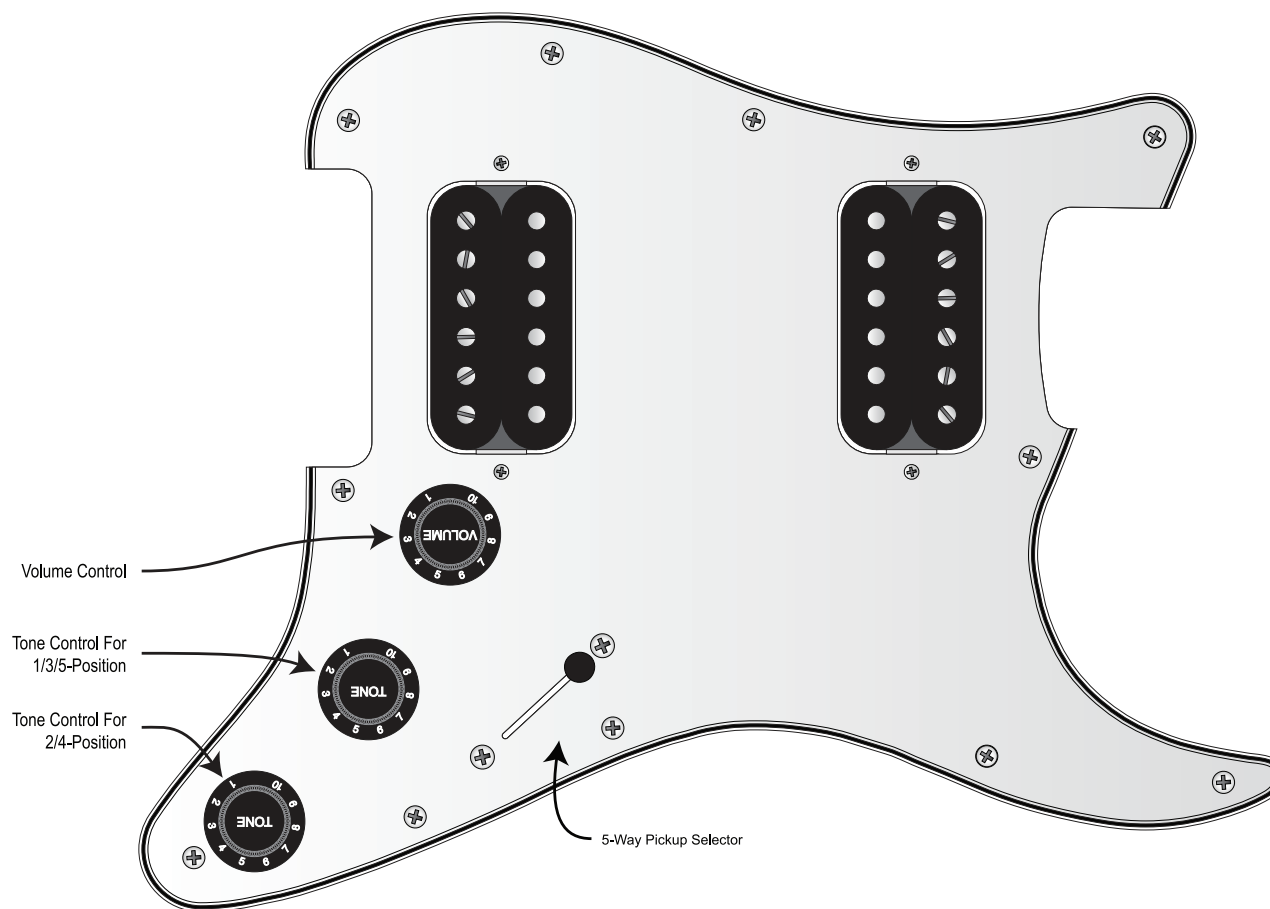
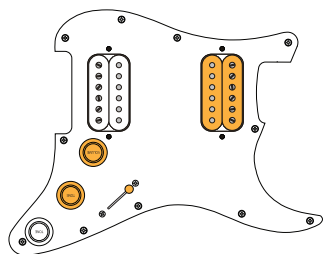
POSITION 3



POSITION 4



POSITION 5



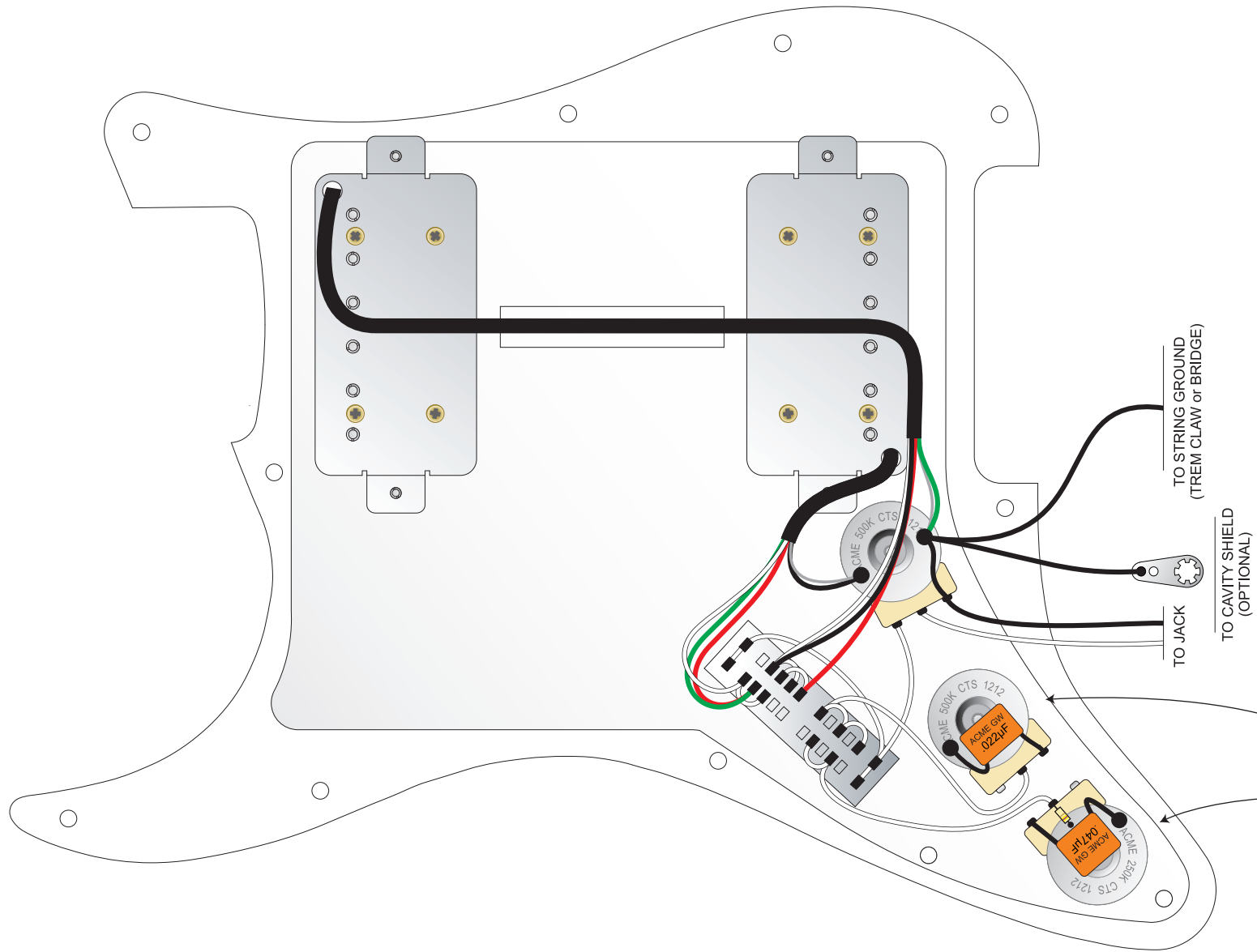
A tweaked version of Fender's Big Apple wiring that works particularly well with unbalanced humbuckers, such as Fralin's Unbuckers, where each pickup contains a strong and a weak coil. These pickups split very nicely, as the strong coil that remains on is more similar to a Fender-esque single coil than half of a traditional (balanced) humbucker.

Our version provides the Fender and Gibson combinations in one guitar! You can think of this wiring as providing Fender positions (2/4) and Gibson positions (1/3/5). The Gibson positions have a 500k volume control and a dedicated tone control with .022 μ F cap, both of which are optimized for humbuckers. But in positions 2 and 4 we split the pickups into single-coils, so we drop the volume pot load to 250k, and provide a dedicated tone control for these positions that uses a .047 μ F cap. Again, dedicated controls that are optimized for single-coils. This pot optimization happens automatically.


In the 2 and 4 positions, we're mimicking two of the most popular settings found on a normal Strat: The bridge + middle position, and the neck-only position. In the 2 position, we use the strong (screw) coil from the neck, plus the weak (slug) coil from the bridge, combined in parallel. We do this so that this position will be hum-canceling.

In the 4 position, we're using the strong coil of the neck pickup.

Might as well eat that cake too, capisce?



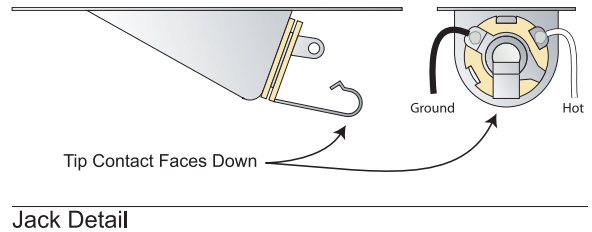
These two pots need to be grounded, either via the pickguard shielding, or via a separate wire that connects them to the volume pot. Black circles or squares in the diagram at left indicate a solder connection.



Build A Better Guitar
 Tone Shapers, Inc.
 772-563-3103
 www.toneshapers.com

DRAWN George Ellison	DATE 4/26/14	TITLE Stratocaster® Big Apple - Unbuckers (Fralin Color Codes Shown)
ASSY PN ST-HH2	ADOC 242	PAGE 1 of 1

© Tone Shapers, Inc. - All Rights Reserved



Jack Detail