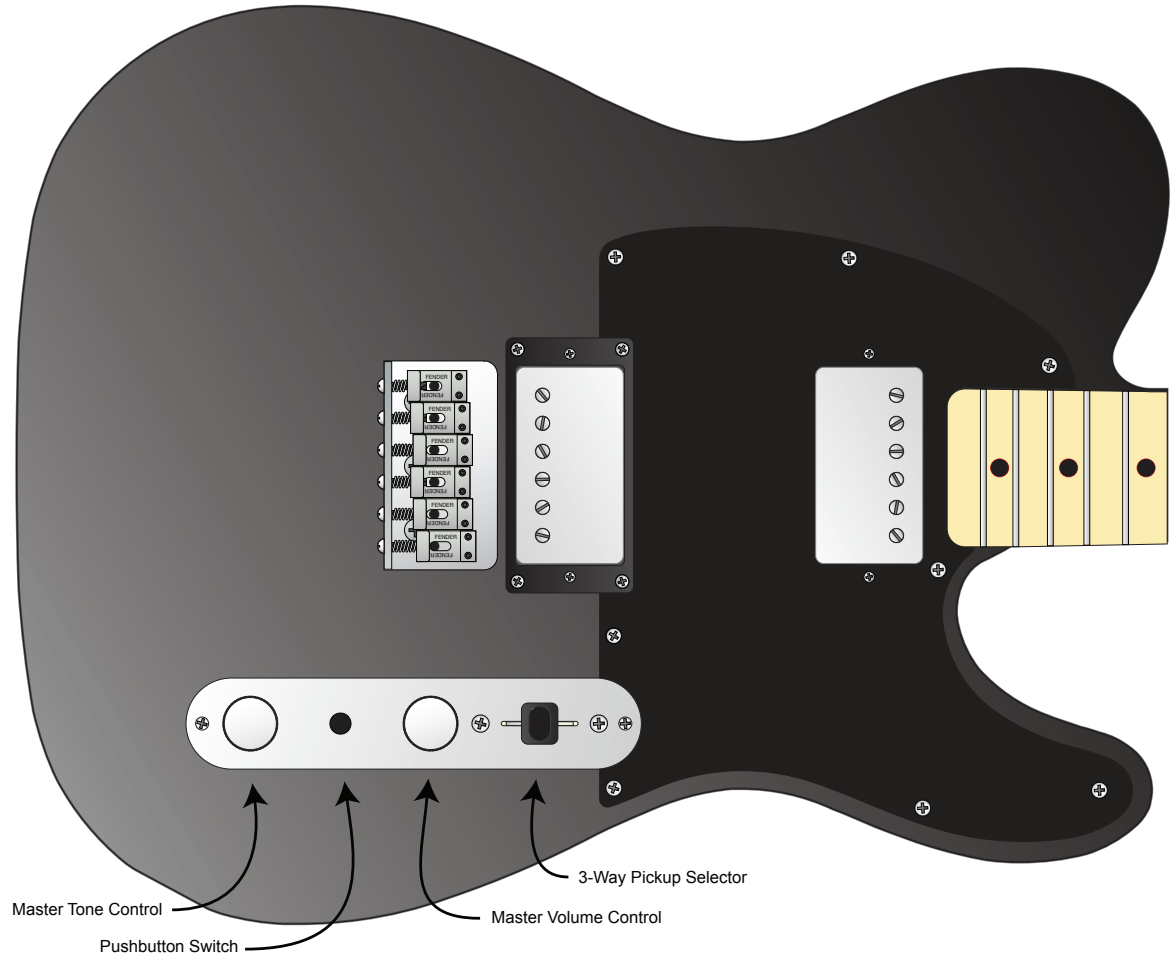
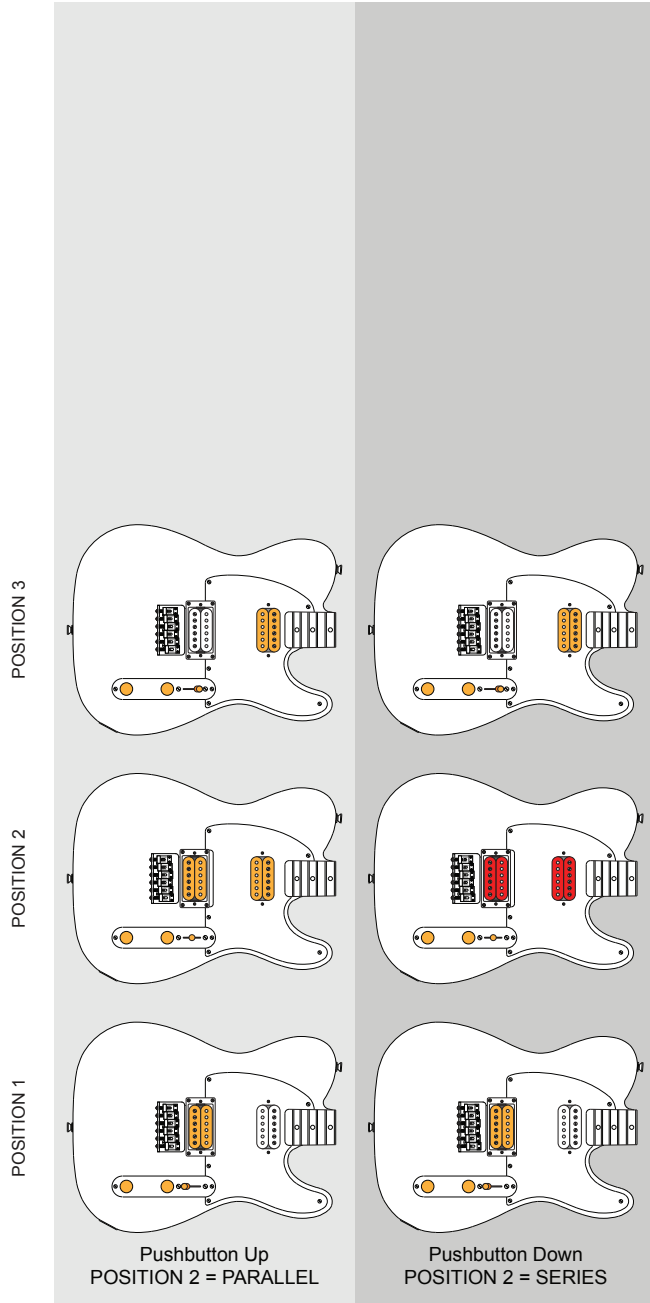


ACTIVE PICKUPS AND CONTROLS INDICATED IN ORANGE



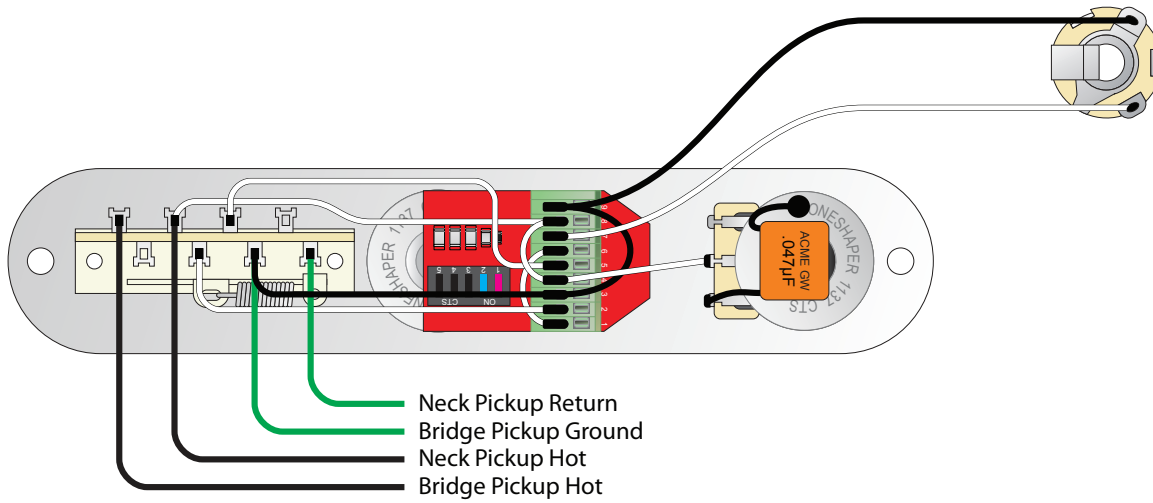
Fender's popular Blacktop Tele features two humbuckers. The stock 3-way switch gives you the three classic Gibson humbucker combinations, but how about a little more flexibility?

Easy, just add our pushbutton switch and you can add additional tonality at the touch of a button. This switch fits neatly between the volume and tone controls, and is completely unobtrusive while remaining readily accessible. In this wiring scheme we're using it to toggle between series wiring and parallel wiring when the 3-way switch is in the middle position. In the "down" position the pushbutton switch protrudes from the face of the control plate only slightly, and in the "up" position it's still very low-profile, so it won't get in the way of your finger if you like to do volume swells.

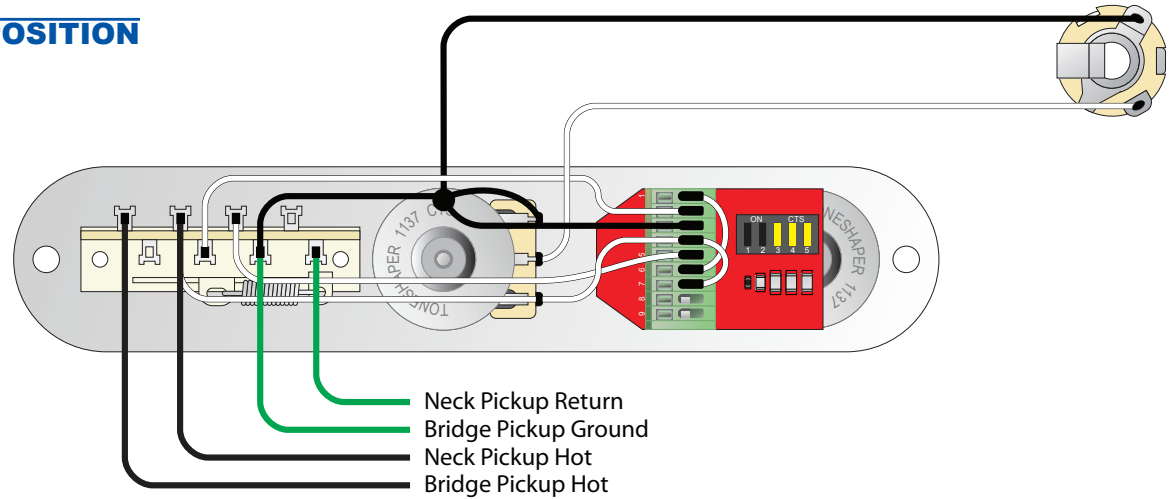
Combining the pickups in series rather than parallel makes for a decidedly more-potent tonal soufflé. Stronger, louder, warmer, fuller; it'll push your amp a little further towards the edge, where the world is a little more exciting and a little more scary. You know what we're talking about.

So don't be skeert, push that envelope! You got to wrangle that Tele you know, they love that.

Note that our accompanying wiring document shows Duncan color codes, not Fender color codes.



PUSHBUTTON USED IN VOLUME POSITION



PUSHBUTTON USED IN TONE POSITION

NOTES

The color codes shown are Seymour Duncan's. For both pickups, the red and white wires will be tied together and then taped off. The junction of these wires shouldn't touch anything else.

The two bare wires must be connected to ground. They can be connected to the same switch lug as the bridge pickup ground, or they can be connected to the back of a pot. Be sure that none of the excess bare wire touches anything in the control cavity. The easiest way to do this is to cover it with heat-shrink tubing.

ToneShaper® Build A Better Guitar
 Tone Shapers, Inc.
 772-563-3103
 www.toneshapers.com

DIP SWITCH SETTINGS
 ■ OFF ■ ON ■ OPTIONAL ■ USE ANY/ALL

DRAWN George Ellison	DATE 10/28/11	TITLE Telecaster® Series/Parallel Pushbutton (Button Down = Series)
ASSY PN TE-HH6	ADOC 346	PAGE 1 of 1

© Tone Shapers, Inc. - All Rights Reserved